

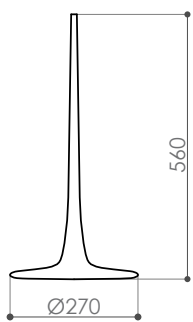
melogranoblu

HYDRA LHASA vetro

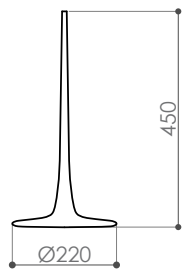
design E. Rocchi & M. Crema - 2008

| | |
|-----------------------|---|
| DESCRIZIONE | Pendente in vetro soffiato sistema Hydra |
| Ambiente di utilizzo: | Interno |
| Montaggio: | Sospensione su tubolare in maglia metallica o su cavetto di acciaio |
| Corpo: | Vetro soffiato rigato trasparente o sabbiato |
| Peso: | 760 g (large), 560 g (medium), 390 g (small) |

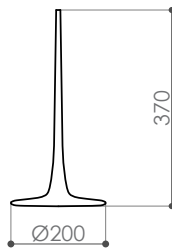
quote in mm



Lhasa large



Lhasa medium



Lhasa small



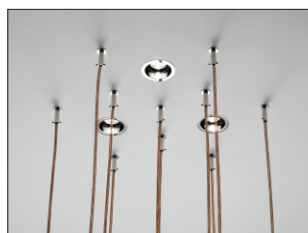
melogranoblu

FONTI LUMINOSE UTILIZZABILI

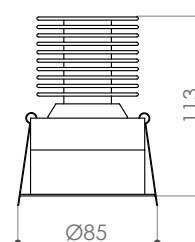
IP20   CE **LED**

↳ LUCE INDIRETTA_sorgente esterna al vetro

↳ INCASSO (solo in presenza di controsoffitto)

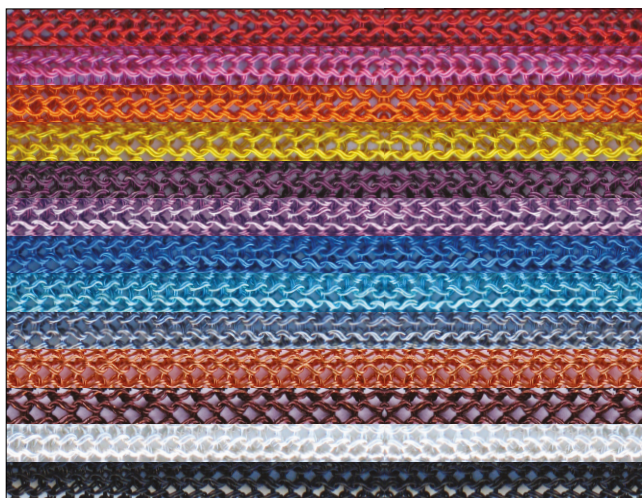


Spot LED ad incasso 10W,
24Vdc, 2700 K cri93 optic 6°
corpo circolare Ø 85 mm.



SISTEMI DI APPENDIMENTO

↳ TUBOLARE IN MAGLIA METALLICA Ø 8mm



#T11 Red
#T34 Fuxia
#T39 Orange
#T26 Gold
#T36 Purple
#T35 Wistaria
#T12 China Blue
#T29 Turquoise
#T08 Titanium
#T00 Copper
#T20 Brown
#T07 Silver
#T21 Black

↳ CAVETTO DI ACCIAIO Ø 0,6 mm

